

SANDCRUISER™



Instruction Manual



APSL (Asian Prime Sources Limited) – Hong Kong

www.wheeliez.com

Congratulations! You have purchased the finest, most versatile, non-motorized, All-Terrain / Beach Wheelchair, which will provide you with exceptional performance as you venture into areas with sand and other challenging terrain. The Sandcruiser™ was specifically designed for adults to provide accessibility to beaches, parks, and trails— paths that standard wheelchairs cannot negotiate!

Purchasing the right equipment is essential to enable users the opportunity to enjoy lifestyle choices. Your Sandcruiser™ has been designed for simplicity and safety. In addition, it has been manufactured using corrosion-resistant stainless steel (316-grade) tubing and fasteners, high-strength molded plastic fittings, and has been equipped with WheelEEZ® balloon wheels for long-lasting, low-maintenance service.

Learning to put the Sandcruiser™ to use quickly and efficiently is the purpose of this manual.

Please Read and Understand the Entire Manual Prior to Using the Sandcruiser™.

Sandcruiser™ General Specifications:

Seat width: 46cm (18 inches)

Seat height: 53cm (21 inches)

Overall length, including footrest 120cm (48 inches)

Maximum width: 98cm (38.5 inches)

Height from ground to top of handles: 102cm (40 inches)

Length between front and rear wheel centers: 56cm (22 inches)

Assembled weight: 26kg (58 lbs)

Sandcruiser™ Component List and Illustrations:

Note: Prior to assembly, ensure that the following components arrived in your Sandcruiser™ carton.



Seat Frame



Backrest Frame



Rear Axle



Foot Rest



All Frame Components



Upholstery Set

The WheelEEZ® Balloon Wheels Ship Separately
Casters shown assembled – see instructions.



Rear Wheels, 49 x 23cm (19.8 x 9 inches)



Caster Wheels, 30 x 18cm (11.8 x 7 inches)

Safety Precautions

WARNING

Failure to Adhere to the Following Safety Precautions Could Result in Serious Injury or Death!

1. Do not leave any person unattended or unsecured while in the Sandcruiser™.
2. Always ensure the seatbelt is properly adjusted for the user.
3. Always set the anti-tip/ parking brake when not in use or in motion.
4. Always maintain physical control of the Sandcruiser™ All-Terrain/ Beach Wheelchair.
5. Weight Limitations:
 - Maximum user weight - 120kg (265 lbs).
 - Note: The WheelEEZ® balloon wheels float; therefore, it is imperative to observe the users weight in relation to the flotation of the wheels.
6. Environmental Precautions:
 - Maintain physical control of the Sandcruiser™ when in or near the water.
 - Use of two attendants is encouraged when water depth is greater than 15cm (6 inches).
 - Observe uneven terrain to prevent tipping (i.e., slopes, inclines, angles, etc.).
 - Observe tidal changes, wave action, wind speed and direction, and extreme temperatures.
 - Observe water depth and wave action when in the water. The balloon wheels will float - do not exceed water levels above the center of the wheels.
 - Sun and heat will cause metal parts to become extremely hot – use caution when handling.
7. Mechanical Precautions:
 - Ensure all lock pins, clips, fasteners, seatbelts, etc. are secure prior to operation.
 - Ensure WheelEEZ® balloon wheels are properly inflated, 0.14 - 0.28 bar (2 - 4 psi).
8. Anti-tip Assembly/ Parking Brake:
 - The anti-tip/ parking brake mechanism is the one of the most important safety features of the Sandcruiser™, and its use is essential to the safety of the user/rider. This component doubles as a wheel brake and anti-tipping device. When properly used it will prevent free-rolling of the chair, and it will prevent rearward tipping of the chair.
 - Note: Refer to the Assembly Instructions for proper use of the anti-tip/ parking brake.

Assembly Instructions

Upholstery: These instructions apply to the Sandcruiser™ and Sandpiper™; however, the Sandcruiser™ has blue upholstery and the Sandpiper™ has yellow upholstery.

Latch Pin Instructions

Note: Latch pins have springs that must be fully compressed to permit latch tab to pivot after insertion. Ensure pin is fully inserted to rotate latch tab. Spring tension will retain pin after it is inserted correctly.



Hold latch pin in horizontal (level) position and insert into intended hole.



Fully compress spring and rotate pin as shown.



Rotate latch tab (as shown) and release.

Casters and Wheels Assembly

Assemble casters and smaller (30cm) wheels prior to assembling Sandcruiser™



Caster components



Insert bushing sleeves x2



Insert metal axle sleeve



Center wheel between caster forks and install bolt



Install and tighten lock nut



Assembled Caster

Front Caster to Seat Frame Assembly

Use the same procedure for both front caster assemblies.

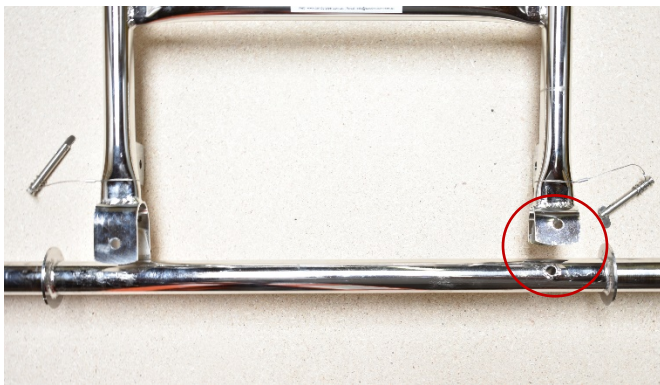


Remove hitch pin from bearing housing - slide caster into housing.

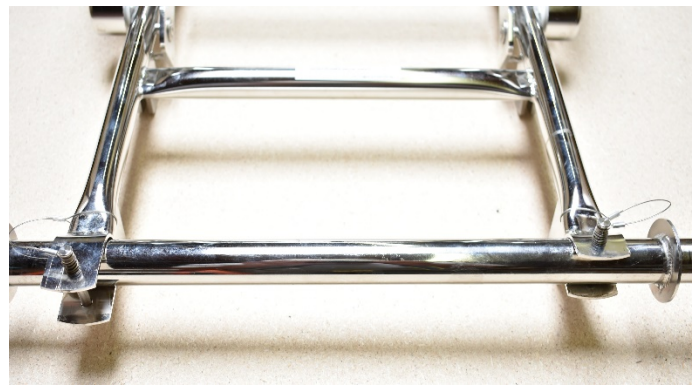


Reinstall hitch pin into bearing housing – ensure pin passes through both holes.

Rear Axle to Backrest Frame Assembly



Position rear axle and seat frame as shown. Ensure correct hole alignment – circle!



Insert axle into frame clevis points and install latch pins.

Seat Frame to Backrest Assembly



Position seat frame onto backrest frame as shown.



Align holes and install four latch pins.

Rear Wheels to Axle Assembly

Note: Ensure axle is clean – free of grit, sand, dirt, etc. prior to installing wheels.



Remove Hitch Pin from axle.



Install wheel onto axle.



Reinstall Hitch Pin to retain wheels.

Foot Rest to Seat Frame Assembly



Insert foot rest into seat frame.



Ensure pin holes align.



Install latch pins, both sides.

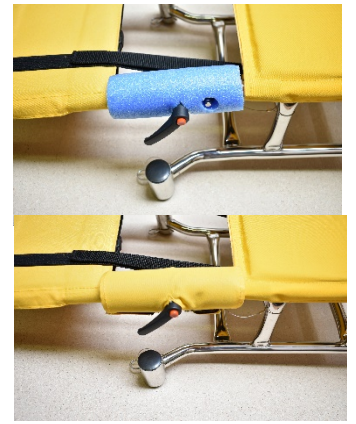
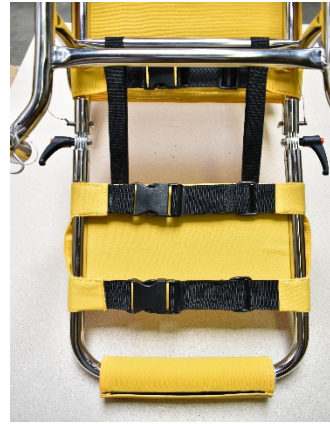
Upholstery Installation – Installation is the same for the Sandcruiser™ and the Sandpiper™



Install seat back pad and attach buckles.



Install seat bottom pad and attach buckles.



Install leg pad and foot rest foam/ wrap.

Install foot rest hinge foam/ wraps.



Install seat belt straps to each side of the seat frame – adjust seat belt accordingly.

Adjustable Components

Foot Rest: The foot rest angle is adjustable for the user's legs. Loosen the black locking levers and reposition the foot rest; retighten the locking levers. Adjust the foot rest leg pad by shortening/lengthening the straps.

Arm Rests

The Arm Rests can be raised to a position 90 degrees from horizontal. This permits for easier transfer

Seat Back Pad and Seat Bottom Pad Straps

The seat back pad and seat bottom pad tension may be adjusted by changing the respective strap length.

Anti-Tip/ Parking Brake Operation

The anti-tip/ parking brake is an integral part of the seat frame, located on the rear of the upright section.

We advise that you practice application/ release of the brake mechanism prior to using the Sandcruiser™

Prior to engaging the mechanism ensure the Sandcruiser™ is in a stable position. Loosen the strap and rotate the anti-tip/ parking brake mechanism rearward and down toward the tires and locking bar.



Anti-tip/ parking brake in stowed position.



To release, undo the strap.



Rotate rearward and down.

NOTE: Press down firmly on the parking brake to engage the locking bar, which prevents inadvertent release of the brake. Ensure the pins on the parking brake engage in the slots of the locking bar.

To release the parking brake, push down firmly with your foot to move the locking bar up to release the pins.



Locking bar and pin disengaged.



Locking bar and pin engaged.

NOTE: Maintain foot pressure on the parking brake during this step – wheel tire pressure will force the parking brake handle up quickly, which may result in the bar striking your leg.



Apply foot pressure.



Release Lock Bar.



Rotate up-secure with strap.

Important - Final Assembly and Functional Checks

- * Ensure that all hitch pins are fully inserted and engaged.
- * Ensure that all latch pins are fully inserted and tabs are in the locked position.
- * Ensure seat belt straps are securely attached to the Sandcruiser™ frame and fitted for user.
- * Ensure that the WheelEEZ® balloon wheels are properly inflated – review information card supplied with the wheels, or refer to the tire’s sidewall.
- * Ensure that the foot rest is properly adjusted and that the handles are tightened.
- * Ensure that you understand and practice using the anti-tip/ parking brake mechanism.

Disassembly of your Sandcruiser™ is in reverse of assembly.

General Maintenance and Cleaning

We advise a clear-water rinse of all components after each use, especially when the Sandcruiser™ has been exposed to salt water, and prior to storage.

Stainless steel frame: We recommend a clear-water rinse after each use. Allow Sandcruiser™ to dry completely. Although not required, a stainless steel cleaner and polish is advisable.

If sand or debris has entered between the wheels and axles, disassemble, rinse thoroughly and reassemble.

WheelEEZ® balloon wheels: We recommend a clear-water rinse after each use. In addition, we advise regular pressure checks to ensure proper inflation.

Upholstery: The upholstery is made from breathable UV-stabilized acrylic, and is resistant to salt water environments, and resists fading. However, we recommend a clear-water rinse after each use. Allow fabric to dry prior to storage.

Optional Accessories:

The following accessories are available by contacting APSL, or your respective Preferred Importer.

- Headrest
- Shoulder Harness
- Lateral Trunk Support

Limited Warranty

APSL - Hong Kong (Asian Prime Sources Limited), Effective April 07, 2010
Wheeleez, Inc. (Authorized Warranty Service Provider for APSL - Hong Kong in the USA)
3890 Industrial Way, Benicia, CA 94510 USA
Tel: 707-751-3999, Fax: 707-751-3939, www.wheeleez.com

LIMITED WARRANTY

CUSTOMER ACKNOWLEDGES THAT BY ACCEPTING AND USING THE Wheeleez® PRODUCT, CUSTOMER IS ACCEPTING ALL OF THE TERMS AND CONDITIONS OF THIS LIMITED WARRANTY AND ITS WAIVERS. CUSTOMER SHOULD IMMEDIATELY RETURN THE PRODUCT IF THESE TERMS ARE NOT ACCEPTABLE.

APSL - Hong Kong ("COMPANY") warrants to the original purchaser ("Customer") of its Wheeleez® products (i.e. the Wheeleez® tire, rim assembly, and frame) that such products shall be free of defects in material and workmanship for the lesser of (i) ninety (90) days from the date of purchase in cases where the Customer leases or rents the Wheeleez® product to third parties; or (ii) six (6) months from the date of purchase by the Customer in the case of other sales (the "Warranty Period"). With respect to any defect in materials or workmanship occurring within the Warranty Period, notice thereof from the Customer must be received in writing by COMPANY at its principal place of business not later than 30 days after expiration of the Warranty Period ("Covered Defect") or the LIMITED WARRANTY will expire and be void. This limited warranty shall not extend to or apply to any industrial use of COMPANY'S product which would require metal bearings for the Wheeleez® wheel, such as in construction applications. In such applications, Customer shall look solely to the separate warranty provided by the bearing manufacturer. Should any court extend the protections of this warranty to such Customer, then the limitations herein stated as to the remedies, duration and extent of the warranty shall apply.

Upon receiving timely written notice of a Covered Defect, and in full satisfaction of its obligations under this LIMITED WARRANTY, COMPANY shall have the option of repairing or replacing any part or the whole of its product to cure the Covered Defect and fully satisfy its obligations hereunder. At its option, COMPANY may either (i) repair or replace the Covered Defect at the Customer's facility, in which event Customer shall cooperate fully with COMPANY, or (ii) COMPANY may require that the Customer ship the part or product affected by the Covered Defect to COMPANY or its designated repair facility for repair. All notices by Customer respecting any Covered Defect shall be through the contact for Wheeleez, Inc., noted above.

All warranty replacements require prior COMPANY approval and must be shipped to COMPANY freight pre-paid. All warranty parts or products are returned to the Customer with shipping charges COD unless otherwise agreed to in writing. If a product or part is replaced or repaired, the Warranty Period for such product or part shall be the later of (i) sixty (60) days after the date of repair or replacement of such defective part or product, or (ii) the remaining length of the original six (6) month Warranty Period for such product or part. Any sales representations or demonstrations shown to the Customer were for purposes or illustration only and do not alter this Limited Warranty or imply any uses for the Company's product other than those for which it was designed. Customer agrees as a condition of its purchase of the COMPANY'S products to review the limitations listed in the wheel/tire warranty information.

This product is not designed and should not be (i) used for horizontal movement along an incline where one side of the product is elevated above the other, (ii) moved at speeds in excess of normal walking speed (2-4 miles per hour), (iii) subjected to sharp turning maneuvers. Exceeding tire pressure and/or maximum payload limitations voids any Warranty. This product is not intended to be used for long-term storage under loaded conditions. This product is NOT legal for "ON-ROAD" use and is NOT intended to be used as a FLOTATION DEVICE, FLYING INSTRUMENT, or TOY.

Any use of this product in a manner other than that for which it was designed shall terminate any warranties hereunder. Furthermore, Seller will have no warranty obligations under this LIMITED WARRANTY if the products or goods furnished by COMPANY to Customer are subjected to abuse, misuse, negligence, OVERINFLATION, accident or any modification not approved by Seller (any modification approved by COMPANY must be carried out in accordance with COMPANY'S instructions, be approved in writing by COMPANY, and must be completed consistent with good engineering practices).

THE WARRANTIES AND REMEDIES PRINTED ABOVE ARE THE SOLE WARRANTIES AND REMEDIES AVAILABLE FOR ANY MALFUNCTION OR DEFECT IN THE COMPANY'S PRODUCTS, REGARDLESS OF THE FORM OF DAMAGES CLAIMED. CUSTOMER AND ALL OTHER PARTIES WHO ACQUIRE AN INTEREST OR USE COMPANY'S PRODUCTS HEREBY WAIVE AND RELEASE COMPANY FROM ANY OTHER WARRANTY OBLIGATIONS WHATSOEVER. EXCEPT TO THE EXTENT OF THE LIMITED WARRANTIES AND REMEDIES SPECIFIED HEREIN, COMPANY DISCLAIMS ANY AND ALL OTHER IMPLIED OR EXPRESS WARRANTIES OR REMEDIES, AND SPECIFICALLY DISCLAIMS ANY OTHER WARRANTIES OF FITNESS, MERCHANTABILITY, OR USE.

REGARDLESS OF ANY OTHER PROVISION HEREIN, (i) COMPANY'S LIABILITY FOR DAMAGES DUE TO DEFECTS IN PRODUCTS OR SERVICES SHALL NOT EXCEED THE COST OF THE PRODUCT, PART, OR SERVICE PAID FOR BY THE CUSTOMER, AND (ii) NEITHER COMPANY NOR ITS AGENTS, REPRESENTATIVES OR SUCCESSORS IN INTEREST SHALL BE LIABLE FOR ANY CLAIMS FOR SPECIAL OR CONSEQUENTIAL DAMAGES CAUSED BY A MALFUNCTION OR DEFECT IN ITS PRODUCTS, WHETHER FOR LOSS OF USE, LOST REVENUE, LOST PROFIT, OR ANY OTHER FORM OF CONSEQUENTIAL OR SPECIAL DAMAGES.

THESE LIMITATIONS ON LIABILITY SHALL APPLY REGARDLESS OF THE CUSTOMER'S PARTICULAR USE OR APPLICATION OF THE COMPANY PRODUCT OR PART, AND REGARDLESS OF WHETHER OR NOT COMPANY KNEW OF SUCH PARTICULAR USE OR APPLICATION. NO AGENT, STAFF, OR EMPLOYEE IS AUTHORIZED TO EXTEND ANY WARRANTIES OR ASSURANCES TO A CUSTOMER CONTRARY TO THESE PROVISIONS UNLESS THEY ARE IN WRITING AND SIGNED BY AN OFFICER OF COMPANY.

ANY CHANGE IN THE TERMS OF THIS LIMITED WARRANTY AND LIMITATION ON LIABILITIES MUST BE IN WRITING AND SIGNED BY COMPANY.

This Warranty gives you specific legal rights while also limiting those rights and your remedies. You may also have other rights under applicable law and certain jurisdictions may preclude limitations on the length of a warranty or on the recovery of incidental or consequential damages. If any portion of this warranty and/or its limitations is deemed to be unenforceable, then the remaining portion shall be enforced.

Should Customer wish to enhance the warranties provided by COMPANY, it may do so by contacting COMPANY and negotiating for enhancements to the limited warranty herein granted based on price. However, no such enhancements shall be valid unless evidenced by a specific agreement to such effect, duly executed by an officer of, and after full payment for the additional costs of such an enhanced warranty.